



WHAT'S NEW



Out of the Box

CREATIVE COLLABORATIONS—DESIGNERS MAKE THEIR MARK WITH EXCITING NEW PRODUCT LINES | PRODUCED BY MARY FITZGERALD

ALEXANDRA CHAMPALIMAUD/ CIRCA LIGHTING

Alexandra Champalimaud leads the multidisciplinary NYC design studio that bears her name. Her debut lighting collection with Circa Lighting features vintage-inspired floor fixtures, imaginative table lamps and modern chandeliers. The Lomme chandelier is shown in soft brass with clear blown glass. circalighting.com, champalimaud.design.

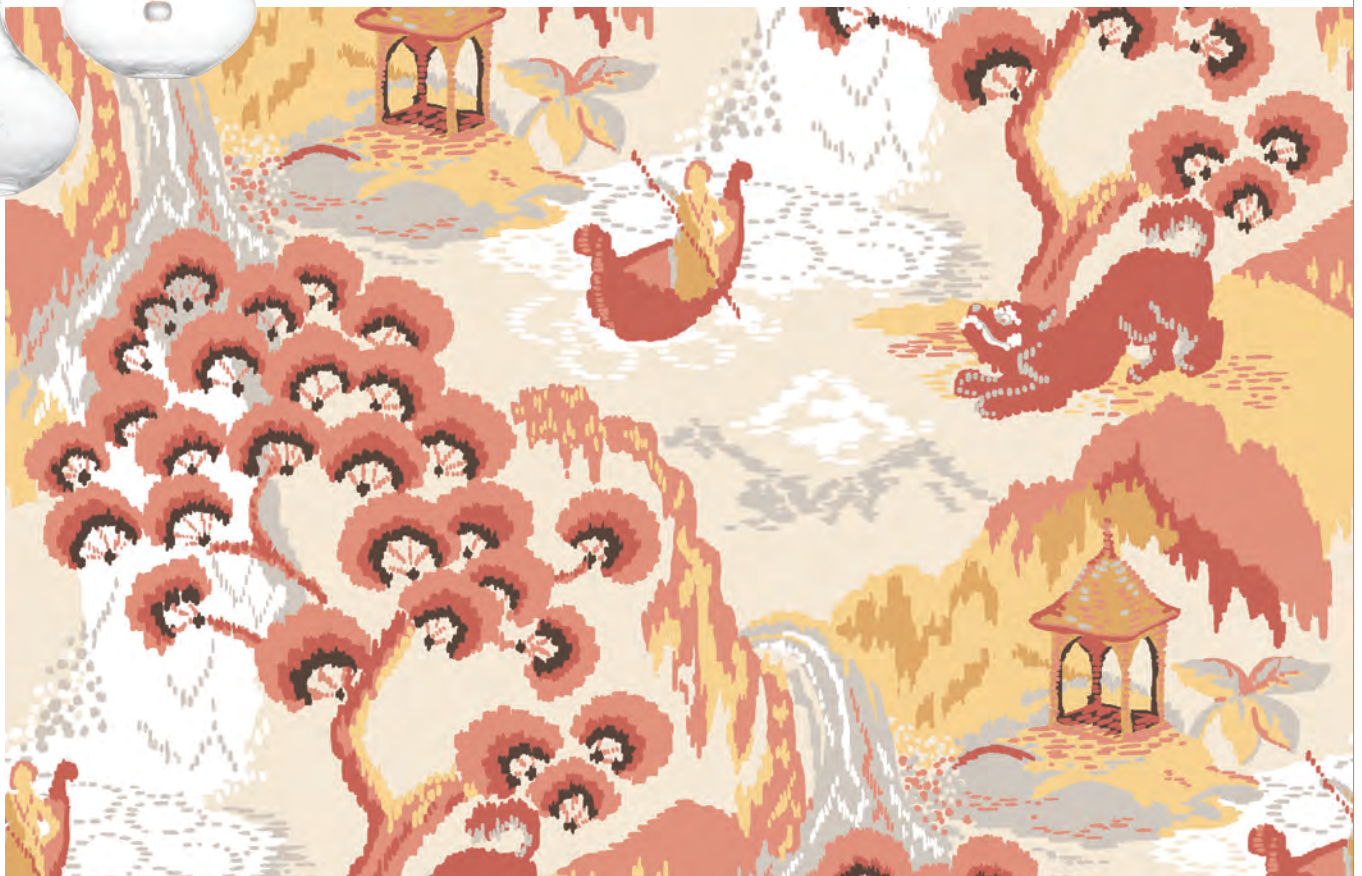


YOUNG HUH/MODERN MATTER

Interior designer Young Huh's just-launched collection with Modern Matter is influenced by her Asian heritage. Based on antique Korean iron hardware and her love of nature, Huh's creations combine principles of classic and modern design with an appreciation of proportion and scale. Fanciful motifs include lily pads, lotus buds, evil eyes and lizards. modern-matter.com, younghuh.com.

MADCAP COTTAGE/YORK WALLCOVERINGS

Known for whimsical, sophisticated and colorful prints, John Loecke and Jason Oliver Nixon of Madcap Cottage stay true to their roots with a premium peel-and-stick wallpaper collection for York Wallcoverings. Florals, trellis patterns and classic chinoiserie motifs—like Old Peking, shown here—are fun, fabulous and easy to apply. yorkwallcoverings.com, madcapcottage.com.





WHAT'S NEW



JONATHAN ADLER/LUNADA BAY TILE

Potter, designer and lover of all things modern, Jonathan Adler brings his signature style to Lunada Bay Tile. The Shelter Island series mimics the tones and textures of the land and sea surrounding Adler's beach house. Dimensional and graphic patterns are handcrafted in ceramic and enhanced with semi-transparent glazing. Available through Greenwich Tile & Marble, greenwichtileandmarble.com, lunadabaytile.com, jonathanadler.com.



BARCLAY BUTERA/LEXINGTON HOME BRANDS

Renowned interior designer, author and lifestyle entrepreneur, Barclay Butera's Laguna collection is his sixth installment for Lexington Home Brands. Featuring a comfortable, bungalow style, casegoods include the Strand bed sporting woven cane panels and a linen white finish. Available through Safavieh, safavieh.com, lexingtonfurniture.com, barclaybutera.com.



COREY DAMEN JENKINS/KRAVET

Making his debut fabric collection with Kravet, Corey Damen Jenkins' Trad Nouveau line offers a fresh perspective on traditional design. Taking his cues from fashion, Jenkins is celebrated for his mix of color and pattern in inspired combinations. The assemblage of 42 textiles ranges from prints, velvets, jacquards, embroidery and stripes. NYDC, D&D, kravet.com, coreydamenjenkins.com.



MABLEY HANDLER/KRAVET

Hamptons, Palm Beach and New York designers Jennifer Mabley and Austin Handler of Mabley Handler have followed up on their successful furniture collection with Kravet. A second series of swivel chairs, sofas, drink tables and beds includes the Georgica bar, shown here in oak and maple with metal accents. NYDC, D&D, kravet.com, mableyhandler.com.



ALFREDO PAREDES/AJ VICTOR

Alfredo Paredes knows a thing or two about style. The multi-talented designer spent 33 years working for Ralph Lauren before opening his own eponymous firm. His third furniture collection, designed and produced in partnership with EJ Victor, is unified by architectural forms and natural materials including wenge, oak, brass and leather. The handsome Ventana Credenza features patterned oyster veneer panels. ejvictor.com, alfredoparedesstudio.com.



ROB MCKINLEY/MONEA, NICOLE FRANZEN

ROB MCKINLEY/MONEA

Meet Monea, a line of furniture and lighting from NYC-based designer and creative director Robert McKinley. Linked to McKinley's Italian roots and the value of quality materials, craftsmanship and understated elegance, the collection includes soulful, artisanal pieces—sofas, coffee tables and lighting—crafted from natural materials such as brass, stone, wood, linen and Murano glass. McKinley paired marble and wood to create the Sphere of Influence coffee table. moneanewyork.com, studiobobertmckinley.com.



WHAT'S NEW

ALESSANDRA BRANCA/CASA BRANCA

Born and raised in Rome, Alessandra Branca has a natural flair for beauty. Her designs are anchored by classical details, rich colors, patterns and textures. Inspiration comes from all facets of her life, including design, art, nature, travel and culture. The Casa Branca line speaks to Branca's vision for the home. She designed the Brighton octagonal ottoman in a cerise stripe with turned legs and brass cup casters. Custom options include nailhead trim and ebonized, cerused or off-white leg finishes. casabranca.com, branca.com.



ESTUDIO PERSONA/PIERRE FREY

Industrial designer Emiliana Gonzalez and artist Jessie Young were both born in Uruguay but met in Los Angeles where they discovered their mutual love of unconventional furniture design. Their studio, Estudio Persona, pays homage to material and shape. The recently released Ruban collection is manufactured by Pierre Frey. [Pierre Frey](http://PierreFrey.com), D&D, pierrefrey.com, estudiopersona.com.



BUNNY WILLIAMS/BUNNY WILLIAMS HOME

Esteemed designer Bunny Williams unveiled Trellage, a new outdoor collection for Bunny Williams Home. Named after her original garden antiques store in NYC, the grouping is driven by her passion for gardening and natural materials. The Brighton mirror is Williams' take on the curves of a Pagoda-style roof. Crafted from powder-coated iron with a rust-resistant finish, the outdoor mirror includes a removable planter for flowers or herbs. bunnywilliamshome.com.

JASON WU/ALLMODERN

Global fashion designer Jason Wu has teamed up with AllModern on a limited-edition offering of rugs, throws and pillows in geometric forms, abstract patterns, stripes and tonal textures. Wu's designs are inspired by midcentury simplicity and the work of modern artists Josef Albers and Mark Rothko. allmodern.com, jasonwustudio.com.

